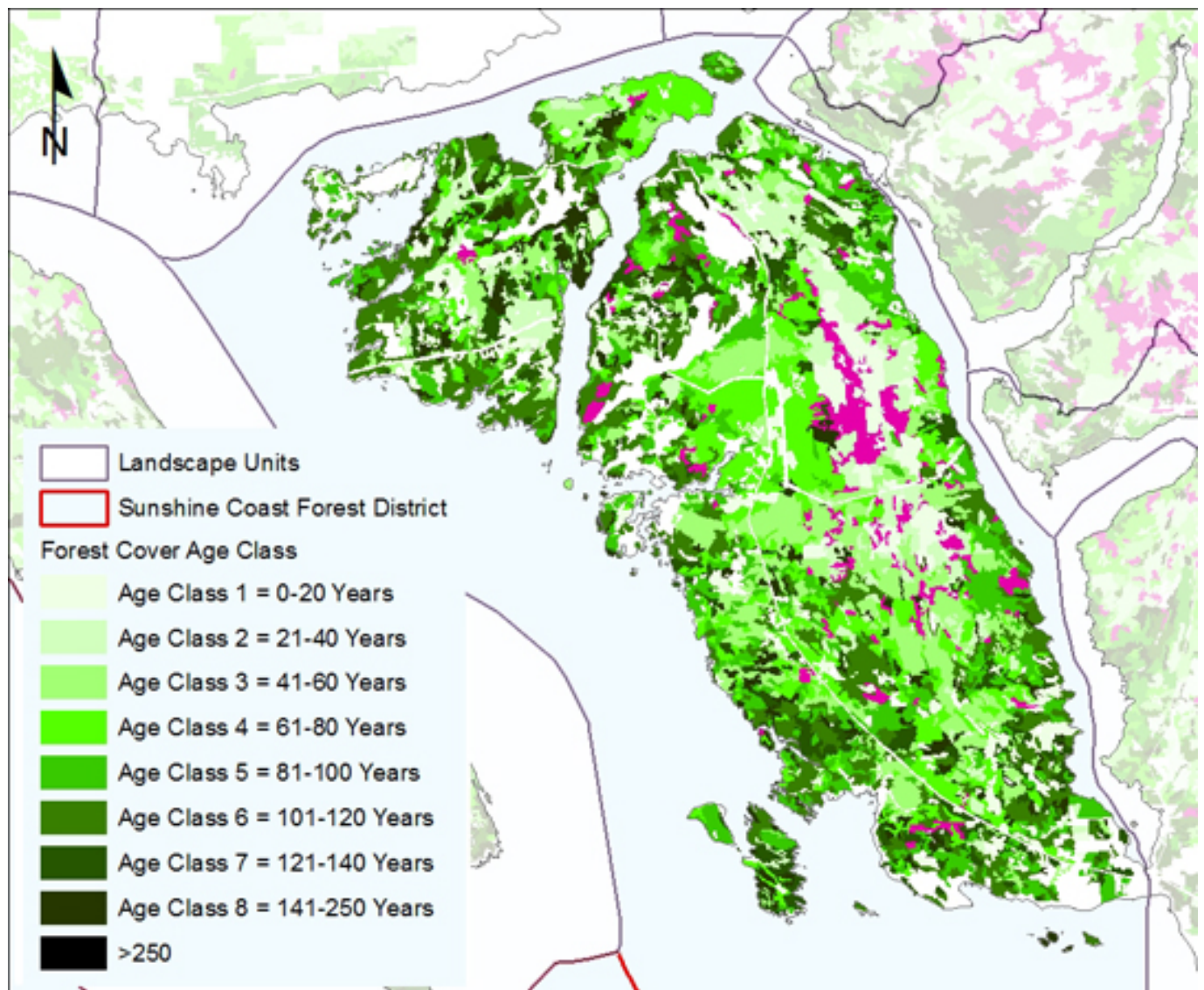


This map again shows that old growth is very rare in the Sechelt Landscape Unit Plan. As well, both Sechelt and Chapman LUs are dominated by young age classes. This is the typical pattern in virtually all of the LUs in the forest district, that old and mature forests at lower elevations are rare and dominated by young biologically simplified ecosystems. Mid-elevation forests are in only marginally better condition.



[See previous page](#)

[See next page](#)